



Northern Illinois Farm Bureaus

FREE AIRFARE

See back for details

11 DAY RIVER CRUISE HOLIDAY

Including two nights in Lucerne, Switzerland



Tulip Time on Jewels of the Rhine

the Netherlands • Germany • France • Switzerland

Departure Date: April 9 – 19, 2021



Tulip Time on Jewels of the Rhine

11 Days • 23 Meals Enjoy a relaxing and inspiring cruise on the Romantic Rhine, Europe's longest river. Travel onboard a luxurious river ship, during tulip time, visiting iconic ports of call, sampling incredible cuisine, and absorbing the local culture.

EXCEPTIONAL INCLUSIONS

- ❖ **23 Meals:** 9 breakfasts, 6 lunches and 8 dinners
- ❖ **Airport transfers** on four dates when air is provided by Mayflower Cruises & Tours
- ❖ Visit **four countries**
- ❖ **Seven-nights in a suite or stateroom** of your choice onboard the vessel
- ❖ **First-class service** by an English-speaking crew
- ❖ **All gratuities included**
- ❖ Explore the magnificent **Keukenhof Gardens**
- ❖ **Shore excursions** with English-speaking local guides
- ❖ Visit **UNESCO World Heritage Sites**
- ❖ Personal **listening device** for shore excursions
- ❖ **All meals included** onboard
- ❖ Variety of **international cuisine**
- ❖ Complimentary **regional wines, beer and soft drinks** with onboard lunches and dinners
- ❖ **Onboard Activity Manager** will support all EmeraldACTIVE excursions and host daily onboard wellness activities, games, classes and evening entertainment
- ❖ Complimentary **bottled water** in your stateroom
- ❖ Complimentary **WiFi onboard**
- ❖ Complimentary **bicycles onboard** for use ashore
- ❖ All port charges included
- ❖ Two-night **hotel stay and touring** in Lucerne
- ❖ \$55 in **Mayflower Money**

CRUISE AND HOTEL ACCOMMODATIONS

Days Two through Eight – Aboard an Emerald Waterways Star-Ship

Days Nine and Ten – Hotel Europe or similar, Lucerne, Switzerland

Pre cruise hotel stays available in Amsterdam. Call for details.



Enjoy seven-nights cruising along the Romantic Rhine River

DAY 1 – Depart the USA

Depart the USA on your overnight flight to Amsterdam, the Netherlands.

DAY 2 – Amsterdam, the Netherlands

Welcome to Amsterdam, a fascinating 700-year-old city of picturesque canals, world class museums, theatres and cafés. You will be met and transferred from the airport to your Emerald Waterways luxury river cruise ship. Become acquainted with the amenities of your ship, or begin exploring the city. This evening, join your fellow travelers for dinner onboard. **Meal: D**

DAY 3 – Keukenhof Gardens

This morning, depart by coach for an included visit to Keukenhof Gardens. Discover why it's called the 'Garden of Europe' as you admire gorgeous flowers at the peak of tulip season. Return to the ship for your first day cruising through the Dutch countryside, passing windmills and sailing through locks towards the Rhine River. Tonight, enjoy a welcome reception and gala dinner. **Meals: B, L, D**

EmeraldPLUS: A visit to Keukenhof Gardens

DAY 4 – Cologne, Germany

Cruise along the Rhine River to Cologne. Founded by the Romans, the city is one of Germany's oldest and famous for its magnificent World-Heritage listed gothic cathedral. After lunch onboard, join your local guide for an included walking tour of the city, touching on the historical charm of the Old Town. Traverse quaint alleyways and see historic monuments. The tour concludes at the cathedral, whose twin spires dominate the skyline. **Meals: B, L, D**

DAY 5 – Koblenz, Germany

Cruise to the 2000-year-old town of Koblenz, situated at the confluence of the Rhine and Moselle Rivers. Enjoy a walking tour of Koblenz and visit the Ehrenbreitstein Fortress on the opposite side of the river. This fortress was part of the Prussian defense against the French in the 19th century and later used as a headquarters for the American military during WWII. This afternoon, sail through the spectacular Rhine Gorge. Pass countless medieval castles and vineyards lining the shores of this section of the river, with photo





Flowers and fragrances fill Keukenhof Gardens



Explore Heidelberg on an included excursion with wine tasting

opportunities around every bend. See the infamous Lorelei statue and Pfalzgrafenstein Castle, built on an island in the middle of the river as a medieval toll station. **Meals: B, L, D**

DiscoverMORE: *Moselle & Cochem (Reichsburg) Castle Visit (additional expense)*

NOTE: You can choose either the included tour of Koblenz OR the DiscoverMORE option, as both tours operate at the same time.

DAY 6 – Mannheim / Heidelberg, Germany

Continue downstream to the town of Mannheim, located at the confluence of the Rhine and Neckar Rivers. From there, travel by coach to Heidelberg where you have the opportunity to either visit the medieval town of Heidelberg on a walking tour, or take part in an active hike to Heidelberg Hill. **Meals: B, L, D**

EmeraldPLUS: *Guided tour of Heidelberg with wine tasting*

EmeraldACTIVE: *Hike from Mount Königstuhl to Heidelberg*

DAY 7 – Kehl / Strasbourg, France

Once docked in Kehl, travel by coach across the river to Strasbourg, the capital of the Alsace region in France. Your guided walking tour includes the Grande Île - the historical city center and UNESCO World Heritage Site. Known for its medieval black and white timber-framed buildings, old tanning houses, baroque sandstone buildings, canals and river locks, the city's star attraction is the cathedral, dominating the main square. **Meals: B, L, D**

EmeraldPLUS: *Guided tour of Strasbourg*

DiscoverMORE: *Tour of Riquewihr (additional expense)*

DAY 8 – Breisach

On today's adventure, visit a typical Black Forest village, full of charm, cuckoo clocks and other German specialties. Alternatively, take part in a guided hike along some of the Black Forest trails.

Meals: B, L, D

EmeraldPLUS: *Black Forest Cake demonstration and tasting*

EmeraldACTIVE: *Guided hike in the Black Forest*

DAY 9 – Basel to Lucerne, Switzerland

After breakfast, disembark the ship in Basel and begin your Swiss adventure. Depart by coach to Lucerne, a picturesque town surrounded by mountains and meadows. An included walking tour

highlights the city's landmark - the famous 14th-century Chapel Bridge. See the 17th-century Renaissance Town Hall and town squares, all set amongst the beautiful backdrop of the Swiss Alps. The remainder of the day is at leisure. **Meal: B**

DAY 10 – Optional Excursion: Mt. Pilatus

Your last day is left free of planned activities. Explore on your own, or join the optional excursion to Mt. Pilatus – a mountain overlooking Lucerne that offers a unique alpine experience! This evening, get together for an included dinner at the hotel. **Meals: B, D**

DAY 11 – Lucerne / USA

Bid 'auf wiedersehen' to Europe and return home with memories of life enriching experiences from your European adventure and cruise along the Rhine River during tulip time. **Meal: B**

Itinerary is subject to change.



Cross the Reuss River via the historic Chapel Bridge in Lucerne, Switzerland

Seven nights accommodations aboard an

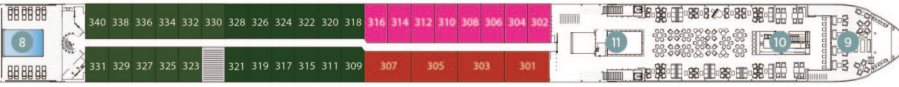
Emerald Waterways Star-Ship

Built: 2014-2017 Speed: 15.5 mph Staterooms: 80 Suites: 12 Length: 443 ft. Crew: 47

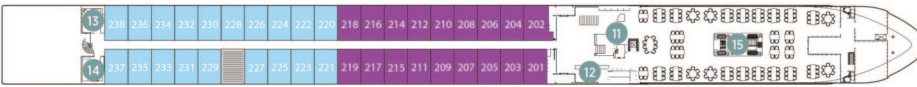
SUN DECK



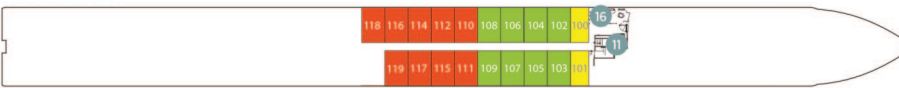
HORIZON DECK



VISTA DECK

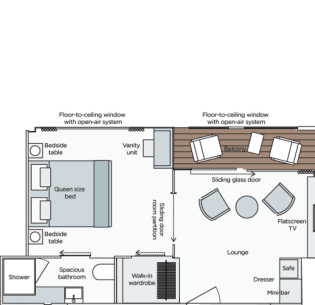


RIVIERA DECK



Public Areas and Ship Amenities

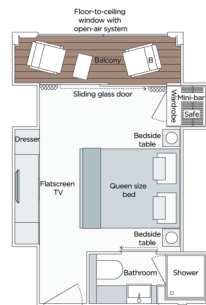
- 1 Sun Deck with Deck Chairs
- 2 Navigation Bridge
- 3 Sky Barbecue
- 4 Golf Putting Green
- 5 Games Area
- 6 Retractable Glass Roof
- 7 Walking Track
- 8 Daytime Pool & Bar / Evening Cinema
- 9 The Terrace
- 10 Horizon Bar and Lounge
- 11 Elevator
- 12 Reception
- 13 Wellness Area
- 14 Fitness Area
- 15 Reflections Restaurant
- 16 Hairdresser



Owner's One-Bedroom Suite

315ft²

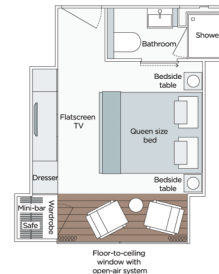
SA



Grand Balcony Suite

210ft²

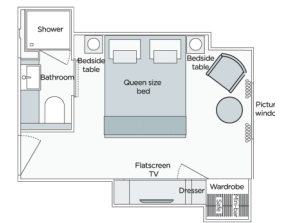
S



Panorama Balcony Suite

180ft²

A B C



Emerald Stateroom

162ft²

D E

Departure Date: April 9, 2021

CATEGORY	DECK	PER PERSON TWIN RATE	SINGLE ROOM
E Emerald Stateroom	Riviera	\$4,299	add \$2,795
D Emerald Stateroom	Riviera	\$4,399	add \$2,859
C Panorama Balcony Suite	Vista	\$4,949	add \$3,219
B Panorama Balcony Suite	Vista	\$5,199	add \$3,379
A Panorama Balcony Suite	Horizon	\$5,399	add \$3,509
S Grand Balcony Suite	Horizon	\$5,799	N/A
SA Owner's One-Bedroom Suite	Horizon	\$6,599	N/A

Mayflower Cruises & Tours' Guaranteed Share Program is available on the Riviera, Vista, and Horizon Decks standard staterooms only.

Please add \$100 per person for those that would like a local group pick up in Freeport with 10 or more travelers.

FREE airfare from Chicago (\$1400) when reservations are made by May 31st, 2020. Beginning June 1st, please call for updated air promo details.

Air itineraries may not be available until documents are received. Air seats are assigned by the airline for the entire group. Seat changes can only be attempted upon receipt of tickets and documents at which time availability may be limited. If specific seat assignments are vital to your reservation, we recommend individual air reservations rather than booking air with the group.

A Travelers Protection Plan is highly recommended. Please contact Lindstrom Travel for more information.

Cancellation Charges Without Traveler's Protection Plan (TPP)
 • 91 days or more Deposit Amount
 • 90 days to day of departure 100% of the total tour
 • No refund on unused portions of the tour

Plan and benefits offered and administered by Trip Mate, Inc.

Exclusions: Mayflower Cruises & Tours reserves the right to alter its Refund and Cancellation Policy when a substantial amount of cancellation or postponement of travel is attributable to: conditions resulting from an act of God, natural or man-made disaster, fire, government action, civil disorder, war, hostilities between nations, or unavailability of transportation through no fault of Mayflower Cruises & Tours. Plan and benefits offered and administered by Trip Mate, Inc.



FOR RESERVATIONS OR INFORMATION CONTACT:

Tony at Lindstrom Travel (815) 398-8888
 or tony@lindstromtravel.com
 Winnebago-Boone Farm Bureau (815) 962-0653
 Jo Daviess County Farm Bureau (815) 858-2235
 Carroll County Farm Bureau (815) 244-3001
 Kane County Farm Bureau (630) 584-8660
 Lake County Farm Bureau (847) 223-6506
 McHenry County Farm Bureau (815) 338-1520

